



Document Capture Solution for High Volume Production

Introduction to ELAN Capture 2.0™

The ELAN Capture™ family of products provides a complete solution for scanning, indexing and PDF conversion of documents used in business processes. The paper or microfilm-based originals are quickly transformed to digital format, providing instant access through searching and retrieval. The different versions of the software provide increasing sophistication in the capture process to enhance productivity and increase the functionality of the output.

ELAN Capture addresses:

- High speed scanning through standards-based TWAIN interface
- Image batch processing for B&W and color formats
- Strong support for PDF technology
- Integrated output to CD-ROM
- Easy to learn user interface with efficient and simple navigation within large amounts of data

Product highlights:

- Raster and PDF image support
- Barcode printing and detection
- Direct image processing (simple batch)
- Page list builder and validator to automate scanning QC
- Bates stamping module
- Forms extraction (zone OCR)
- Indexing solution with unlimited user-definable fields
- Powerful QC features, incorporated throughout workflow for high level of quality assurance
- Hierarchy outliner
- State-of-the-art imaging technology and PDF conversion with searchable output
- CD publishing module with royalty-free retrieval application with index search capability
- Support for CMS, CRM and record management systems

ELAN Capture is a general purpose scanning, image processing, indexing and publishing application

The modular software architecture of the ELAN GMK products is designed to adapt to different business environments. The ELAN Capture family of products take full

Strong support for PDF

Create sophisticated PDF files that can be used in any environment:

- Searchable (text through OCR)
- Embedded and external metadata
- Bookmarks
- Accurate display of scanned images

use of this unique capability, and provide coverage for a wide range of markets, including:

- Accounting and banking
- Financial services
- Legal and litigation
- Manufacturing and government
- Medical records and insurance
- Local & federal government

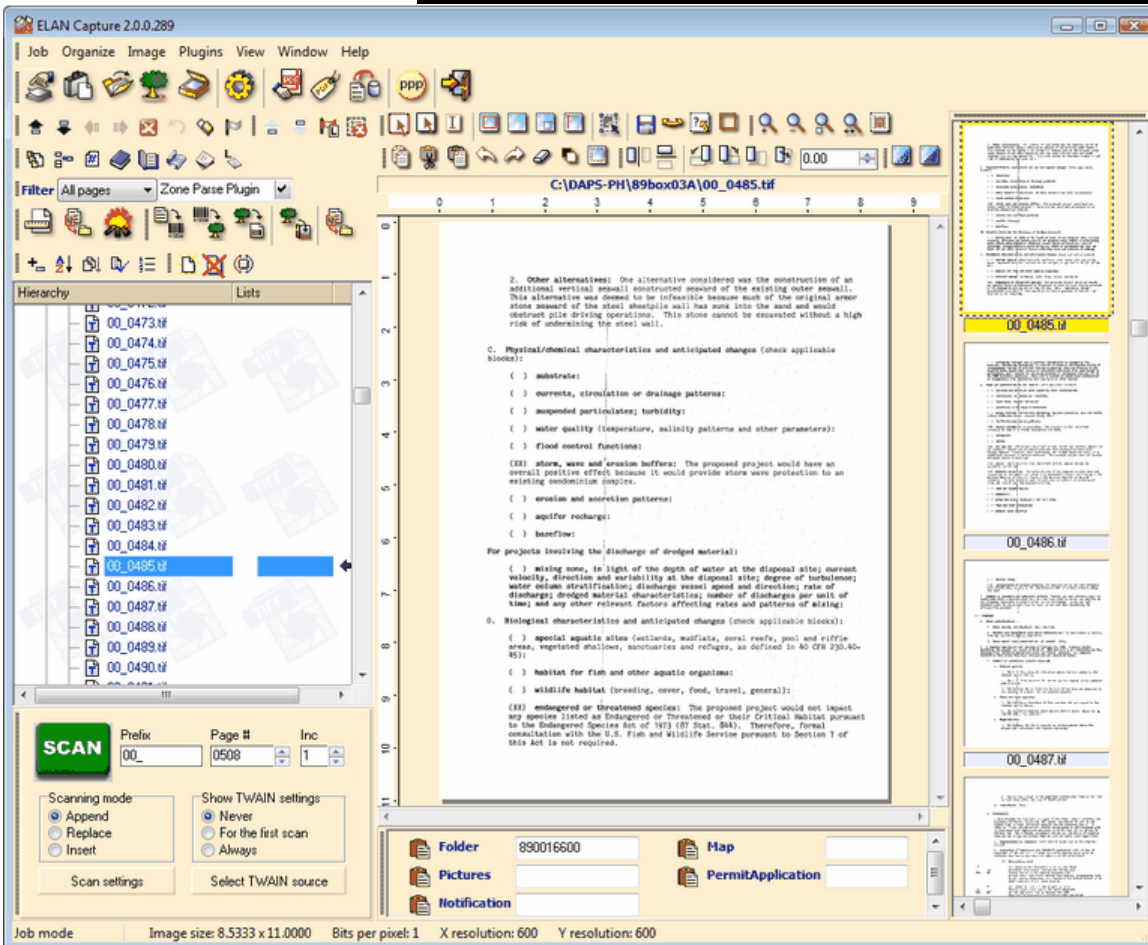


Capture more business using ELAN Capture!

www.elan-gmk.com

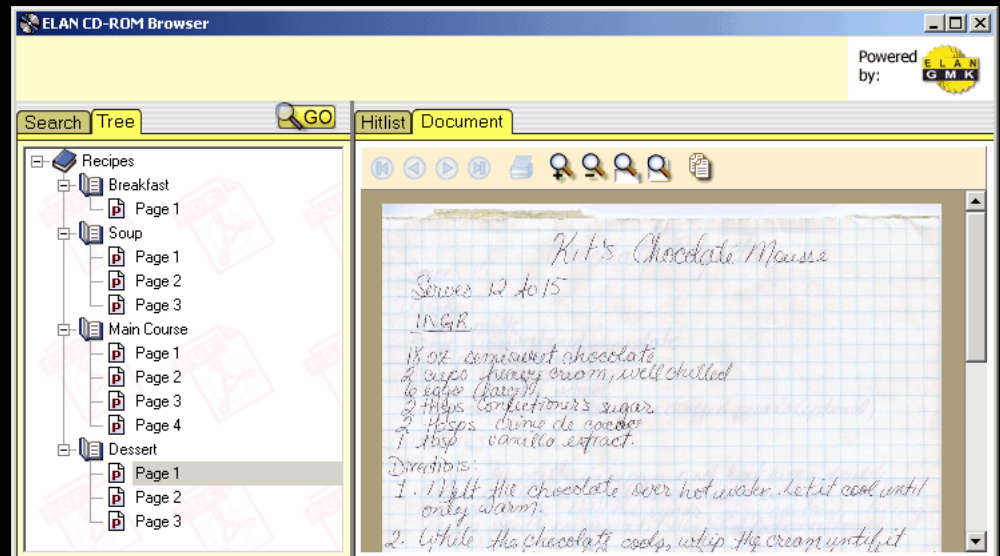
ELAN GMK
825 Hemlock Ridge Court
Simi Valley, CA 93065
Tel:(805)577-0288 Fax:(805)577-0473
E-mail: sales@elan-gmk.com





The clean and simple user interface is intuitive and easy to learn.

The CD/DVD Browser runs directly from the drive and does not require any installation to the host computer.



ELAN Capture 2.0™ specifications:

Operating system:

MS. Windows 2000, XP, Vista

Minimum Hardware Req:

2 GHz processor, 1 GB RAM, 200 MB Hard Disk.

Scanner Interface: TWAIN compatible